



Products

A revolutionary respiratory protection designed for healthcare

Tiki medical is one of the most advanced safety products on the market, developed in Sweden to protect personnel working in hazardous environments. The mask has both inhalation and exhalation filter and is therefore suitable to use in healthcare operations. The blower automatically

adjusts the airflow to the user's demand making it easy to breathe even during longer periods. Tiki has built-in LEDs and is certified to the highest protection class for powered air purifying respirators (PAPR), EN 12942 TM3P.

Tiki medical starter kit



Tiki medical

Contains all parts that are needed to start using the Tiki medical:

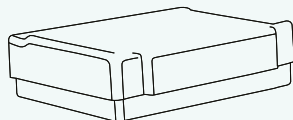
A mask, a harness, two filters, a white filter for inhalation and a green filter for exhalation, a blower with built-in battery, a charger, and a screw seal.

Choose between three sizes of the mask: S, M och L.

- 1200-51 TikiSTART Medical Small Standard
- 1200-52 TikiSTART Medical Medium Standard
- 1200-53 TikiSTART Medical Large Standard



Replacement parts



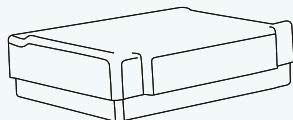
TikiFILTER white for inhalation

Exchangable P3 particle filters.

1005-51 P3 white filters 2pcs

1005-52 P3 white filters 120pcs

1005-53 P3 white filters 2x30pcs

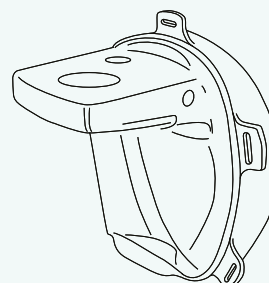


TikiFILTER green for exhalation

Exchangable P3 particle filters.

1005-56 P3 green filters 2pcs

1005-57 P3 green filters 120pcs



TikiMASK Medical 5-pack

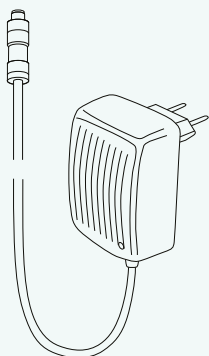
Exchangable masks.

1210-51 5-pack green masks S

1210-52 5-pack green masks M

1210-53 5-pack green masks L

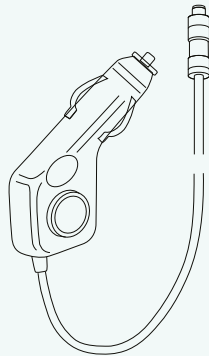
Accessories



TikiCHARGER

Charger for AC outlets.

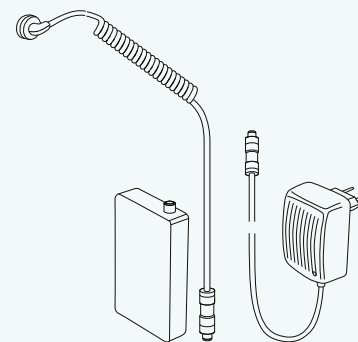
1013-53 Charger



TikiCAR charger

Car charger for 12-24V.

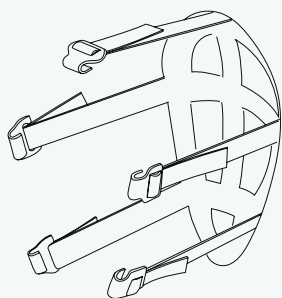
1080-51 Car charger



TikiEXTERN

Set with external battery, charger and cord. The external battery has a high capacity. It also has a belt clip for convenient attachment.

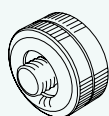
1007-51 External battery and charger



TikiHARNESSES 5 pack

Soft harness to keep the mask in place.

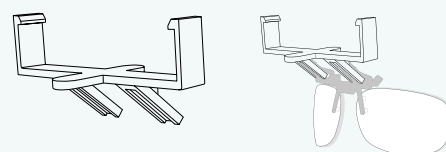
1012-51 Harness 5 pack



Screw seal

Seal the hole in the mask on the left side, where the external battery connects.

1121-52 Tiki screw seal



Holder for glasses

A holder to attach "flip-up" glasses inside the mask.

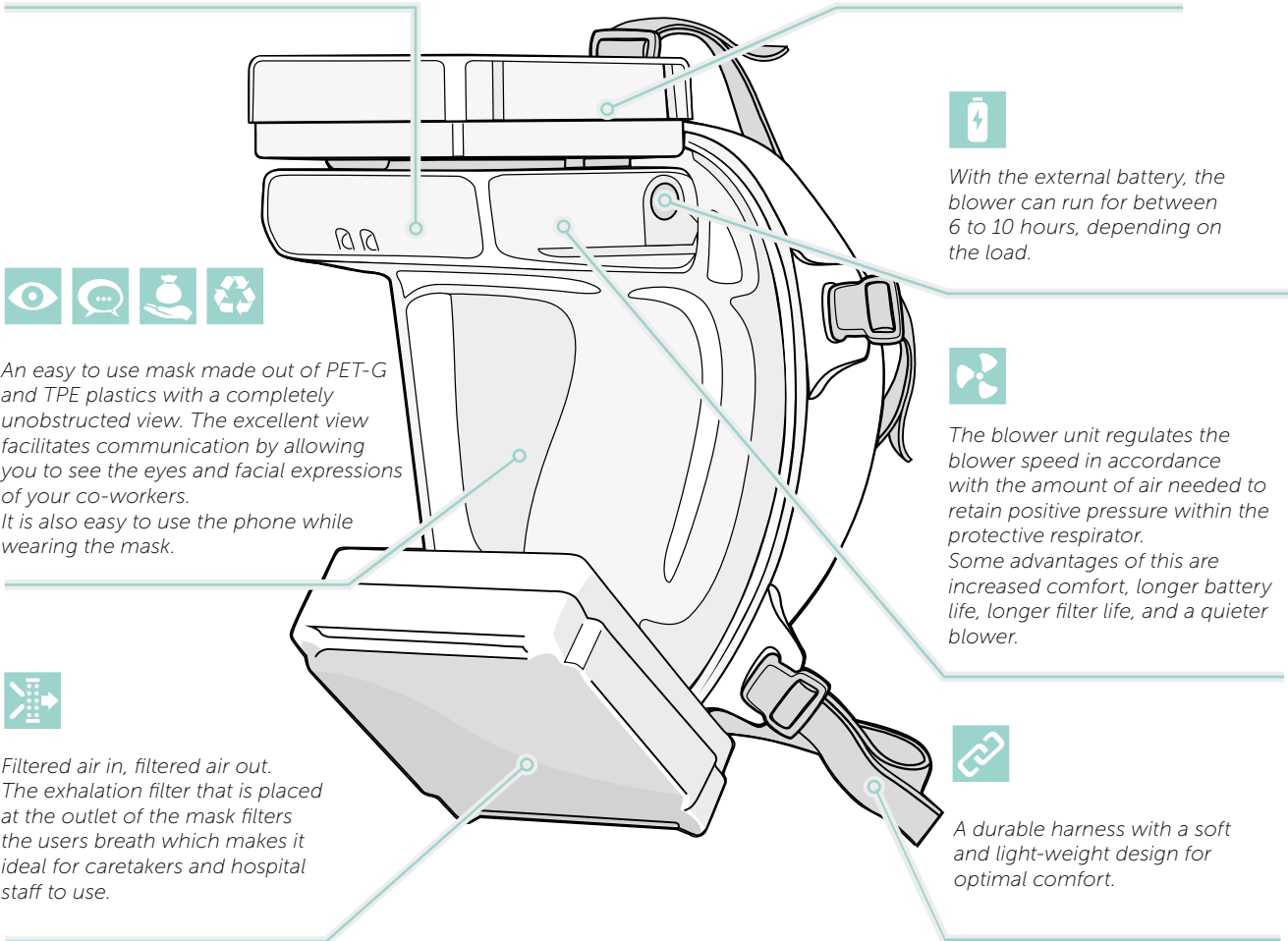
1120-51 Tiki glasses holder



The Tiki is battery powered with an internal battery lasting for 1–2,5 hours depending on the load. There is a more powerful external battery as an accessory. The blowing unit is equipped with LED lights which facilitate work in dark conditions.



The particle filter protects against all types of particulate pollutants (P3). It's quick and easy to change both the filter and mask. The filter is quadratic in shape to achieve a maximal filter surface and a long service life.



An easy to use mask made out of PET-G and TPE plastics with a completely unobstructed view. The excellent view facilitates communication by allowing you to see the eyes and facial expressions of your co-workers. It is also easy to use the phone while wearing the mask.



Filtered air in, filtered air out. The exhalation filter that is placed at the outlet of the mask filters the users breath which makes it ideal for caretakers and hospital staff to use.



With the external battery, the blower can run for between 6 to 10 hours, depending on the load.



The blower unit regulates the blower speed in accordance with the amount of air needed to retain positive pressure within the protective respirator. Some advantages of this are increased comfort, longer battery life, longer filter life, and a quieter blower.



A durable harness with a soft and light-weight design for optimal comfort.



Tiki Safety AB
Skällstavägen 9
SE-19740 Bro
SWEDEN

+46 (0)8 353 249
info@tikisafety.com
tikimed.com



The complete mask is certified by NB according to ISO EN 12942.



The exhalation filter is a Medical device Class 1 product intended to be used in combination with the complete mask.